

INDIBA[®]

ACTIV THERAPY
MEDICAL PROIONIC SYSTEM

new era
new
horizons

360°
Satisfaction

PROIONIC[®] SYSTEM



Complete
active cell therapy

Research • Clinical Studies • Training • Active Cell Therapy • Development • Manufacturing
Treatment Versatility • Results • Satisfaction



360°



EXPERIENCE GOING BACK TO 1983 WITH MORE THAN 19,000 DEVICES ON THE MARKET CONFIRMS **INDIBA S.A.** AS A LEADING COMPANY AND **INDIBA[®] ACTIV THERAPY** AS A **VERSATILE, SAFE AND PRECISE** TOOL FOR THE COMPREHENSIVE TREATMENT OF PHYSIOTHERAPY PATIENTS.

The latest scientific research in the field of molecular biology has demonstrated significant "frequency dependent" benefits within our bespoke 448 kHz range.

The integration of two operational modes CAP and RES, makes it possible to combine sub-thermal (electric) and thermal effects, resulting in:

- **Regulation of cellular metabolism processes**^{1,2}
- **Tissue regeneration**^{1,3}
- **Stem cell stimulation and differentiation**^{1,3}
- **Blood flow activation**⁴
- **Tissue compacting effect**⁵
- **Analgesic and anti-inflammatory activity**^{6,7}

Using a technique that is:

- **Harmless**
- **Safe**
- **Has proven efficacy with thousands of treatments carried out daily in many countries**

This underpins **INDIBA[®] Activ Therapy** as a broad spectrum **CELL THERAPY** intended for both acute and chronic stages of treatment.

INDICATIONS

- **Musculoskeletal injuries**
- **Joint pain**
- **Pelvic floor**
- **Physio-aesthetics**

CONTRAINDICATIONS

- Pacemaker or other electronic implants
- Pregnant women
- Wounded skin
- Thrombophlebitis



IT IS NOT CONTRAINDICATED IN PATIENTS WITH METALLIC PROSTHESES⁶

1. Hernández-Bule, ML, Paino CL, J, Trillo, MA, Úbeda, A. Electric stimulation at 448 kHz promotes proliferation of human mesenchymal stem cells, Cell Physiol Biochem 2014;34(5):1741-1755.
2. Hernández-Bule ML, Roldan E, Matilla J, Trillo A, Úbeda A. Radiofrequency currents exerts cytotoxic effects in NB69 human neuroblastoma cells but not in peripheral blood mononuclear cells. Int J Oncol 2012; 41:1251-1259.
3. Hernández Bule ML, Paino CI, Úbeda A. In vitro stimulation with 0.45 MHz electric currents promotes proliferation in human ADSC. 10th International Congress of the European Bioelectromagnetic Association. Rome, 21 - 24 February 2011.
4. Kumaran B, Watson T. Capacitive Resistive Monopolar Radiofrequency (CRMRF) therapy at 448 kHz: The effects on deep blood flow and elasticity of tissues. Physiotherapy UK 2015 Conference, 16-17 October 2015, Liverpool, United Kingdom.
5. Internal Report. Medical Department. Indiba SA. Sant Quirze del Vallés (Spain), July 2016
6. Terranova A, Vermiglio G, Arena S et al. Tecarterapia nel trattamento post-chirurgico delle fratture di femore. Eur J Phys Rehabil Med. 2008; 44 (Suppl 1) (3):1-2.
7. Stagi, P., M. Paoloni, F. Ioppolo, V. Palmerini and V. Santilli (2009). A randomised, double blind, placebo controlled clinical trial on Tecarterapia in the treatment of lumbago [Stagi P, Paoloni M, Ioppolo F et al. Studio Clinico randomizzato in doppio ciego tecarterapia versus placebo nell trattamento della lumbalgia. XXXVI Congresso Nazionale Simfer. 16-20 november 2009. Rome

SCREEN PROTECTION COVER AND
HOLDER FOR CREAM AND ACCESSORIES

ROTATIVE AND RESISTIVE
TOUCH SCREEN

REMOVABLE AND
PORTABLE DEVICE



PLATE HEATER

INTEGRATED COLUMN

STORAGE DRAWERS

CONTROL BUTTON

**Greater precision, control
and functionality**



NEW FEATURES



Continuous modulation

- Modulated frequency to improve the following effects of:
 - Liquid extravasation
 - Oedema reduction
 - Reabsorption of internal bleeding
 - Prevention of bruising
 - Erosions of internal origin
 - Fistula treatments
 - Perioperative applications

Precision

- Accuracy in increase and decrease of power adjustment
- Strictness in time control (real and accumulative)

Free mode treatments

- Three power ranges depending on the application for better precision and safety
- Control of time and delivery of energy, monitoring: tissue resistance, impedance and other parameters

Pre-set protocols

- More than 30 protocols
- Updates via WiFi

Customised protocols

- Set up your own protocols
- Possibility of exchanging protocols within a virtual community

Monitoring software

The most professional way of controlling all parameters of a session and monitoring your patients' progress:

- Graphics of tissue evaluation
- Record of sessions
- Printable / deliverable report
- Can be customised by centre
- Clinical case data sharing

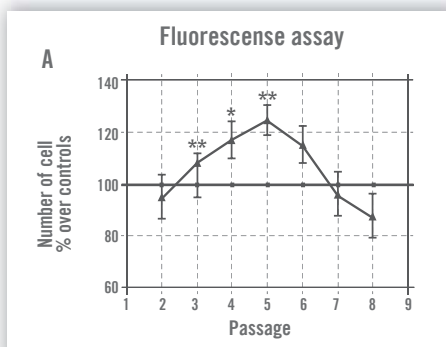




**Safety and results are confirmed
by scientific studies**

MORE THAN 170 REFERENCES AND SCIENTIFIC ARTICLES, UNDERGRADUATE AND PhD THESES SUPPORT THE EFFECTIVENESS OF **INDIBA® ACTIV THERAPY**

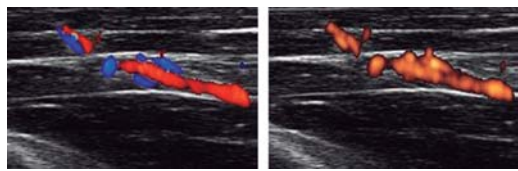
Stimulates stem cells proliferation ⁸



The **Proionic® System** increases human mesenchymal stem cell proliferation by more than 25% compared to the control, without affecting stem cell pluripotentiality.

The graph shows the influence of INDIBA® Activ Therapy on stem cell proliferation in comparison to the control of non-exposed cells normalised as 100.

Improves the rate and volume of blood flow ⁹

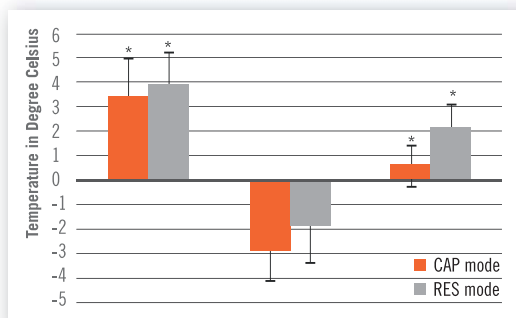


Colour Doppler image showing blood flow rate

Power Doppler image showing blood volume

Positive changes in tissue blood flow at a depth of at least two centimetres under the skin in response to cutaneous application of **INDIBA®** have been shown in a recent study carried out in healthy volunteers in the United Kingdom as part of a PhD thesis project.

The thermal effects persist once active treatment has ended ¹⁰



Temperature gain from baseline to post treatment

Temperature decay from post treatment to 45-minute follow-up

Temperature retention at 45-minute follow-up:
 CAP 15.5% (±20.1);
 RES 60.3% (±34.5)

The thermal effects are essential for understanding the mechanism of action of **INDIBA®** and they last until after the treatment has ended. The thermal increase achieved after treatment is significantly greater with resistive treatment than with capacitive treatment.

8. Hernández Bule ML, Martínez Botas J, Trillo MA et al. Antiadipogenic effects of subthermal electric stimulation at 448 kHz on differentiating human mesenchymal stem cells. *Mol Med Rep* 2016; DOI: 10.3892/mmr.2016.5032.

9. Kumaran B, Watson T. Capacitive Resistive Monopolar Radiofrequency (CRMRF) therapy at 448 kHz: The effects on deep blood flow and elasticity of tissues. *Physiotherapy UK 2015 Conference*, 16–17 October 2015, Liverpool, United Kingdom.

10. Kumaran B, Watson T. Thermal build-up, decay and retention responses to local therapeutic application of 448 kHz capacitive resistive monopolar radiofrequency: A prospective randomised crossover study in healthy adults. *Int J Hyperthermia* 2015; DOI: 10.3109/02656736.2015.1092172



Samuel Honrubia, Mickael Guigou y Luc Abalo
 French National Handball Team
 2015 World Champions

Dimitri Bascou
 Rio Olympiad Bronze medal 110 m hurdles
 2016 European Champion 110 m hurdles

Adam Raga
 Trial 2005 and 2006 World Champion

Vincenzo Nibali
 Winner of the 2016 & 2013 Giro d'Italia,
 2014 Tour de France and 2014 Vuelta a España

Javier G. Noya
 Triathlon 2008/10/13/14/15 World Champion
 and Olympic Medalist

Nairo Quintana
 Winner of the Vuelta a España 2016
 and Giro d'Italia 2014



FC BARCELONA MEDICAL SUPPLIER



BARÇA



Real Federación Española de Vela



AS MONACO MEDICAL SERVICE PARTNER



PANATHINAIKOS BC MEDICAL SERVICE PARTNER



Torre de Champions



METROPOLREGION RHEIN-NECKAR

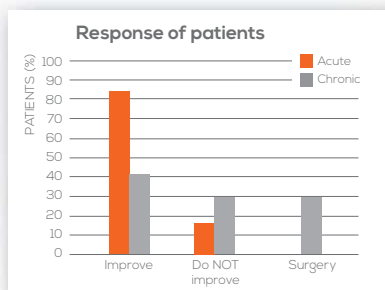


COMMISSION FEDERATION

**Elite athletes trust in
 INDIBA® Active Therapy**

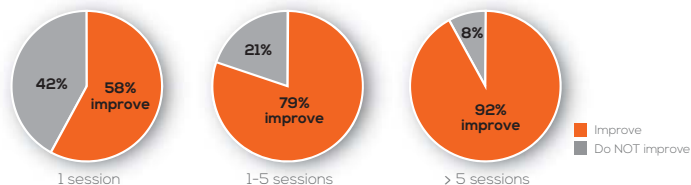
NATIONAL FEDERATIONS, OLYMPIC TEAMS, SPORTS CLUBS, DOCTORS, PHYSIOTHERAPISTS AND HEALTHCARE PROFESSIONALS TRUST OUR TECHNOLOGY.

Highly effective in the treatment of acute sports injuries ¹¹



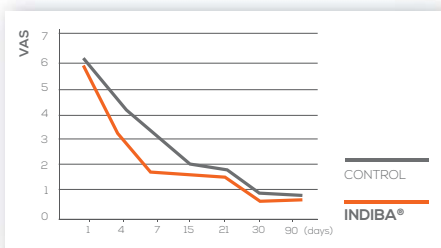
Graphic representation of patient classification according to the condition of their injury and the improvement with treatment.

Its anti-inflammatory and analgesic efficacy is of great interest for treating acute sport injuries

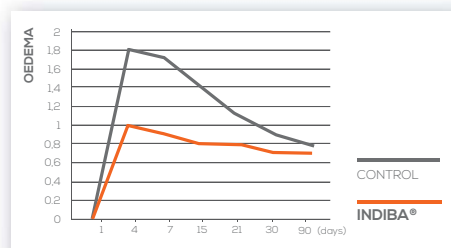


Percentage of improvement according to number of sessions applied.

Evolution of pain and oedema after post-operative treatment for femur fracture ¹²

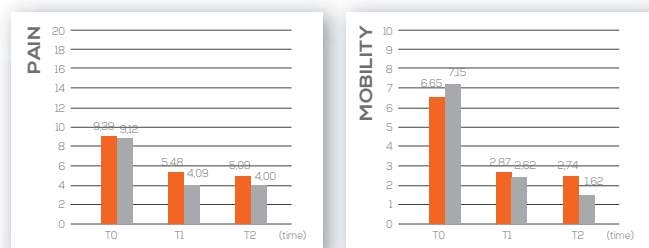


Reduction in pain on the fourth ($p = 0.0045$) and seventh days ($p = 0.033$) with INDIBA versus control.



Evolution of oedema: Increase in muscle perimeter in both groups up to the fourth day (1 cm INDIBA vs 1.80 cm control) $p=0.009$. There was subsequently a statistically significant decrease in this value in both groups, although they reached a similar value by the thirtieth day. This reduction in volume occurred sooner in the INDIBA group.

Improvement in WOMAC osteoarthritis index scale ¹³



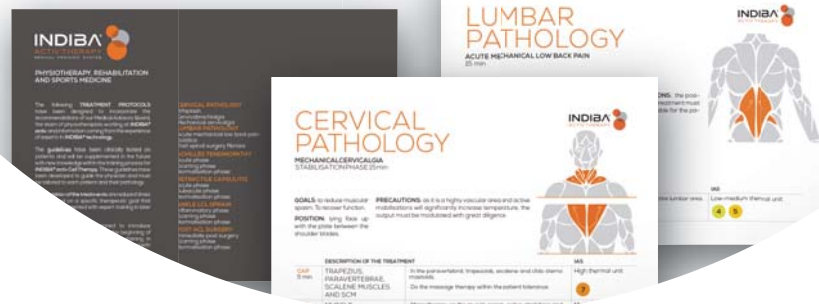
Treating knee osteoarthritis improves control of patients' pain, limitation and quality of life parameters

Where T0 is before treatment, T1 at the end of treatment and T2 one month after the last session.

- Vall J, Sendrós S, Sust F et al. Radiofrecuencia Monopolar Capacitiva/Resistiva a 448 kHz (INDIBA® Activ Therapy), como Terapia de Rehabilitación en Medicina Deportiva. Análisis retrospectivo de su aplicación en un Centro de Alto Rendimiento Deportivo (CAR Sant Cugat, Barcelona) durante el periodo 2009-2011. Congreso de AEMB, Bilbao, España, 20-23, Junio 2012
- Terranova A, Vermiglio G, Arena S et al. Radiofrecuencia Monopolar Capacitiva-Resistiva a 448 kHz en el tratamiento postquirúrgico de las fracturas de fémur. Europa Medicophysica; Vol. 44 - Supl. 1 al n.º 3, Octubre 2008
- Ronconi G, Specchia A, Maggi et al. Evaluation of the effects of capacitive and resistive diathermy on knee osteoarthritis. 18th European Congress of Physical & Rehabilitation Medicine, 28th May - 1st June, 2012 Thessaloniki, Greece



Knowledge and training



OUR GOALS ARE TO FACILITATE ACTIVE, PERMANENT LEARNING OF THE **INDIBA® ACTIV THERAPY** METHODOLOGY AND TO IMPROVE THE KNOWLEDGE, SKILLS AND ATTITUDES OF HEALTHCARE PROFESSIONALS WITHIN A CONTEXT OF SCIENTIFIC AND TECHNOLOGICAL ADVANCES.

The **INDIBA® Activ Therapy** training team consists of physiotherapists specialising in the treatment and follow-up of patients and athletes within a therapeutic and competition setting.

Ongoing training. Our commitment is to meet the needs of therapists so that they can improve their clinical practice and optimise the benefits of an **INDIBA® Activ Therapy** device by implementing exclusive protocols using our technology.

Clinically applied specialised training. Several tools are needed within a therapeutic setting to ensure comprehensive and effective patient care. The different specialities covered by the **INDIBA® Activ Therapy** training programme ensures that patients' needs can be met.

Gradual training. **INDIBA® Activ Therapy** training is designed so that healthcare professionals are gradually able to build up a sound knowledge, thus optimising their therapeutic results and patients safety with **INDIBA®** certification.

Customised training. The Medical and Training departments provide assistance and clinical support for all our clients to accompany and help them with any clinical questions that might arise, either virtually or in person.

Up-to-date training. We are in contact with the scientific community, leading research within the sector, innovating and adapting our methodology and our treatment strategy in line with the latest scientific data.

TECHNICAL SPECIFICATIONS

	ACTIV 701	ACTIV 801	ACTIV CT8	ACTIV CT9
Output frequency	448 kHz	448 kHz	448kHz ±1kHz	448 kHz ±1 kHz
Max. output power in RES mode	65 W	100 W	100 W	200 W
Max. output power in CAP mode	250 VA	350 VA	350 VA	450 VA
Continuous modulation	-	-	20 kHz	20 kHz
Return plate warmer	-	-	Integrated in the column	
Pre-set protocols	-	-	YES	
Customised protocols	-	-	YES	
Monitoring software	-	-	Optional	YES



MEDICAL DEVICE
MADE IN EUROPE

INDIBA® Activ Therapy

AT THE WORLD'S BEST PHYSIOTHERAPY AND MEDICAL CLINICS

INDIBA® estimates that over 120,000 patients are treated daily with our technology.

ANDORRA • AUSTRALIA • AUSTRIA • BELGIUM • BOSNIA • BRAZIL • CROATIA
CYPRUS • CZECH REPUBLIC • FRANCE • GERMANY • GREECE • HONG KONG
INDONESIA • ITALY • JAPAN • LEBANON • LUXEMBOURG • MACEDONIA • MALAYSIA
MALTA • MONTENEGRO • NETHERLANDS • NEW ZEALAND • PERU • PHILIPPINES
POLAND • PORTUGAL • RUSSIA • SERBIA • SINGAPORE • SLOVAKIA • SLOVENIA
SPAIN • SWITZERLAND • TUNISIA • TURKEY • UK • UNITED ARAB EMIRATES

All INDIBA® brands

www.indibaactiv.com



The
difference
is
Indiba®